

Rugged managed 10 & 19 port Gbit Switch for DIN-Rail or Flange mounting

General Description

The μ MAGBES Family is a 10 & 19 port manageable Gigabit Ethernet switch of the 4th generation of MPL switches. The robust design, low power consumption, and the various mechanical configurations make the switch ideally suited for any application that need a rugged and reliable solution.

Besides manageable features such as Long-term availability, Quality of Service, Port Based VLAN, and IEEE 802.1Q VLAN, the μ MAGBES also supports Rapid Spanning Tree IEEE 802.1D 2004 and allows to use redundant Ethernet connections without introducing network loops.

This μ MAGBES solution is equipped with RJ45 connectors. All ports have status LEDs, indicating the activity and speed of each port, including reset and default setting.

The μ MAGBES switch solution is extremely compact and comes as open frame or as boxed version with RJ45. Supply power is 5–36VDC and uses under any condition less than 6W (10-ports). The product can be operated at -20°C to 60°C and optionally even in extended temperature to be used outdoors. The solution is available with DIN-Rail or Flange mounting.

μ MAGBES Highlights

- High-End RJ45 connectors
- Wide input 5 - 36VDC
- Fully manageable over Web Interface or Telnet
- Fanless operation
- Versions for extended temperature -40 to +85°C
- Can be used unmanaged
- Long-term availability
- Open frame solution

These features make

the μ MAGBES switch ideally suited for any rugged or industrial network application with long life cycle requirements. Due to the low power consumption, robust and flexible design, the product is well suited for tough environments. The μ MAGBES makes it easy to set up a challenging network!



All MPL products are 100% designed and manufactured in Switzerland.



10 port managed Switch with DIN-Rail housing



10 port managed Open Frame Switch



19 port managed Switch with DIN-Rail housing



19 port managed Open Frame Switch

MPL AG is an ISO9001 certified company

Web: www.mpl.ch
Email: info@mpl.ch

MPL AG, Täfernstrasse 20, CH-5405 Dättwil
Phone +41 56 483 34 34 Switzerland



Technical Features

Board Key Data	
Switch lookup Engine	support up to 1024 MAC entries with automatic learning and aging supports auto crossover (Auto MDI/MDIX) support polarity correction
Jumbo Frame support	up to 10k Byte
Status LED	2 LEDs for each copper port (Link/Activity and Speed indicators)
Interfaces	
LAN	μMAGBES-A10 - 10-port Gigabit on RJ45 connectors μMAGBES-A19 - 19-port Gigabit on RJ45 connectors
CLI	Optional CLI interface over Micro USB connector
Management Software	
MPL developed and maintains a management SW with easy to use web interface.	
Management supports:	<ul style="list-style-type: none"> • Port Based VLAN • Quality of Service • IEEE 802.1D RSTP support • SNMP V1, V2c, V3 support • Telnet • IGMPv3 snooping • IEEE 802.1Q VLAN • IEEE 802.1X MAC Address Checking • Port monitoring • Firmware Update via HTTP or TFTP • TLS (HTTPS)
Power	
Input voltage	5VDC- 36VDC Input range, input over 4-pin power connector
Power consumption	Typically 6W per 10 ports
Environment	
Storage Temperature	-45°C to 85°C (-49°F to 185°F)
Operating Temperature	-20°C to 60°C (-4°F to 140°F) at full operation optionally -40°C to 85°C (-40°F to 185°F) at full operation
Relative Humidity	5% to 95% none condensing
Standard Compliance	
The μMAGBES is designed to meet or even exceed the most common standard, particular references are:	
EMC	EN 55022, EN 55024, EN 61000, MIL-STD-461E
Shock & Vibration	EN 60068
Environmental & Safety	EN 50155, MIL-STD-810-F, EN 60601, EN 60950
Approval List	CE, IEC 60945, IACS E10

Dimensions

Chassis version	length	width	heights	weight
10 port boxed version	136mm x	113mm x	50mm	740g
19 port boxed version	196mm x	154mm x	50mm	1300g
10 port open frame	137mm x	108mm x	42mm	640g
19 port open frame	205mm x	148mm x	42mm	1150g

Optional coating and bonding available

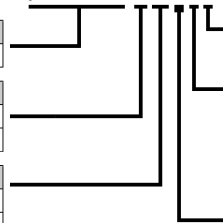
Ordering Information

Product	Description
μMAGBES	Managed Ethernet Switch

Version	Description
A	Standard
C	With CLI

Ports	Description
10	Quantity of ports
19	Quantity of ports

μMAGBES-A10DRX



Option	Description
X	-40°C to +85°C

Copper	Description
R	RJ45
HR	Horizontal Header (MOQ 50 pieces)
H	Header
MX/D	M12 (X or D coded)

Mount	Description
O	Open Frame
D	DIN-Rail
F	Flange

MPL AG is an ISO9001 certified company