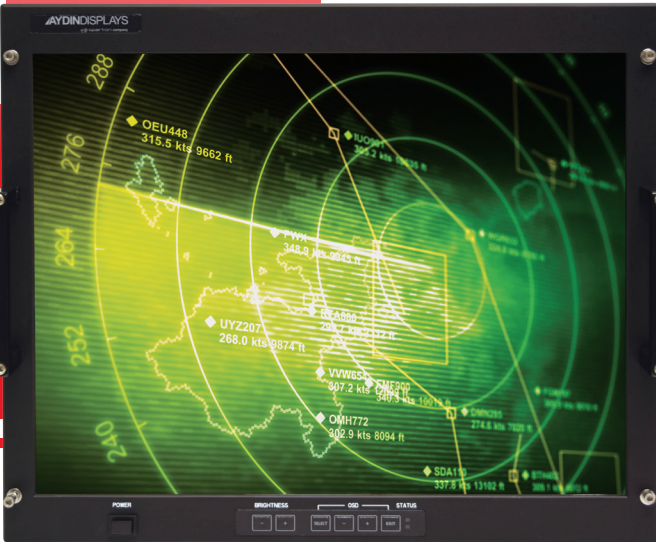


AYDINDISPLAYS

a sparton company

WWW.SPARTONRE.COM | SALES@SPARTONRE.COM



4421R5C

21.3" COLOR FLAT
PANEL DISPLAY

FEATURES:

- Convenient Front Controls
- High Brightness with Full Range Dimming
- Anti-reflective Protective Viewing Window
- Wide Viewing Angle

SPECIFICATIONS:

Active

Display Area: 17.01" x 12.76"

Pixel Pitch: 0.27 x 0.27 mm

Brightness: 200 cd/m² (minimum)
250 cd/m² (typical)

Viewing Angle: ±88° All Directions (typical)
±80° (minimum)

Contrast Ratio: 1000:1 (typical) Dark Ambient
300:1 (minimum)

Response Time: 16 ms (typical) TR + TF

Display Colors: 16.7 million

Synchronization Range: **Horizontal:** 31.5 to 91.1 kHz
Vertical: 56 to 85 Hz

Input Signal: **Video Sync:** Analog 0.7 V p-p/75 Ω Separate sync. TTL level
Horizontal Sync: Positive/Negative
Vertical Sync: Positive/Negative
Composite Sync: Positive/Negative Sync on Green (Video 0.7p-p and Sync 0.3Vp-p)

Input Video Interface: 5 BNCs, DVI-I

Video Input Impedance: 75 Ohms (analog Input)

Resolutions Supported: 640 x 480 @ 60-85 Hz
720 x 400 @ 85 Hz
800 x 600 @ 56-85 Hz
1024 x 768 @ 60-85 Hz
1280 x 1024 @ 60-85 Hz
1600 x 1200 @ 60 Hz

Native Resolution: 1600 x 1200 @ 60 Hz

User Controls: Power, Brightness, Contrast, On Screen Display (OSD)

Humidity: **Operating/Storage:** 5 to 95% RH Non-condensing MIL-STD-810E, Method 507.3 Procedure I

Temperature: **Operating:** 0°C to 50°C, MIL-STD-810E Method 501.3/502.3, Procedure II
Storage: -20°C to +60°C, MIL-STD 810E, Method 501.3/502.3, Procedure I
Optional: -40°C

Altitude: **Operating:** 0 to 42,000 ft. above sea level MIL-STD 810E, Method 500.3
Storage: 0 to 54,000 ft. above sea level MIL-STD 810E, Method 500.3

Rapid Decompression: RTCA/DO-160D, 8,000 ft ASL to 42,000 ft. ASL in 15 seconds, 42,000 ft. ASL to 25,000 ft. ASL in 5 minutes

Shock: MIL-S-901D, Grade A, Class 1 Type A

Vibration: MIL-STD-167-1A, Type 1

Drip: MIL-STD-810E, Method 506.3 Procedure II, Front Panel only

Sand/Dust: MIL-STD-810E, Method 510.3, Front Panel only

EMI: MIL-STD-461F, CE101, CE102, CS101, CS106, CS114, CS116, RE101, RE102, RS101, RS103

Power: **Supply:** Internal 90- 132/180-264 VAC Auto Ranging
Frequency: 47-440 Hz
Power: 100 Watts (Typical); 120 Watts(Max)
Chassis Connector: MS27466T09B98P
Cable Connector: MS27467T09B98S

Dimensions: 19"W x 15.75"H x 1.5"DP

Weight: 28 lbs

Compatibility: PCs, Workstations & X-Terminals

WWW.SPARTONRE.COM | SALES@SPARTONRE.COM

Please contact your sales representative for more information.
Consult Factory on pricing and lead time.