

# Themis RES-XR6 3U

*20" Deep, 8 Drive, Rear I/O Rugged Rack Mounted Server*

- Up to two Intel Xeon Scalable Processors with 28 cores
- Up to 2TB DDR4 ECC Memory
- Up to 240TB of Storage and 6 PCIe 3.0 cards
- MIL-STD: 810G, 901D, 167-1, 461



A part of the *EnterpriseSeries™*, Mercury's Themis RES-XR6 3U Server employs the latest Intel® Xeon® Scalable processors to accelerate compute intensive workloads for applications such as signal intelligence, cryptography, AI, surveillance, sensor fusion, analytics, communications, and audio/video processing.

## Accelerated Cloud Computing

Featuring up to two Intel® Xeon® Scalable processors with AVX512, 2TB DDR4 ECC memory, 240TB of storage in eight disk drives, expansion slots, and enhanced reliability features, the RES-XR6 3U delivers superior workload-optimized performance and hardware-enhanced security for mission critical applications.

## Designed for the Field

The system incorporates advanced thermal and mechanical design features to provide superior resilience to shock, vibration, dust, sand, and temperature extremes. Dual redundant, hot swappable AC or DC power supplies provide high availability while a specially designed dust cover, new memory retention + vibration dampeners, and optional tamper-proofing and tamper-evidence features offer users extra security for operations on the move.

*Mercury Systems is a leading commercial provider of secure sensor and safety-critical processing subsystems. Optimized for customer and mission success, Mercury's solutions power a wide variety of critical defense and intelligence programs.*

## Space Optimized Scalability

Optimized for size, weight, and power (SWaP), the system weighs only 29lbs, is 20" deep, and meets military environmental specifications. A robust array of high speed I/O, storage options, enhanced security features, and expansion choices allow users maximum flexibility for current and future system requirements.

## Proven Performance

Mercury's EnterpriseSeries RES Servers are trusted worldwide for their high-performance, long life cycles, thermal resiliency, compatibility with industry standards, and SWaP optimization. With the latest Intel core-count processors and configurable I/O, RES servers are ideally suited to next-gen radar, mission, advanced simulation, command, control, and battle management processing mission critical applications.

## Your Reliable Teammate

With over 30 years of technical expertise, Mercury Systems works closely with customers to design computing solutions that are easy to integrate, affordable, and reliable for years to come.



ACQUIRE



DIGITIZE



PROCESS



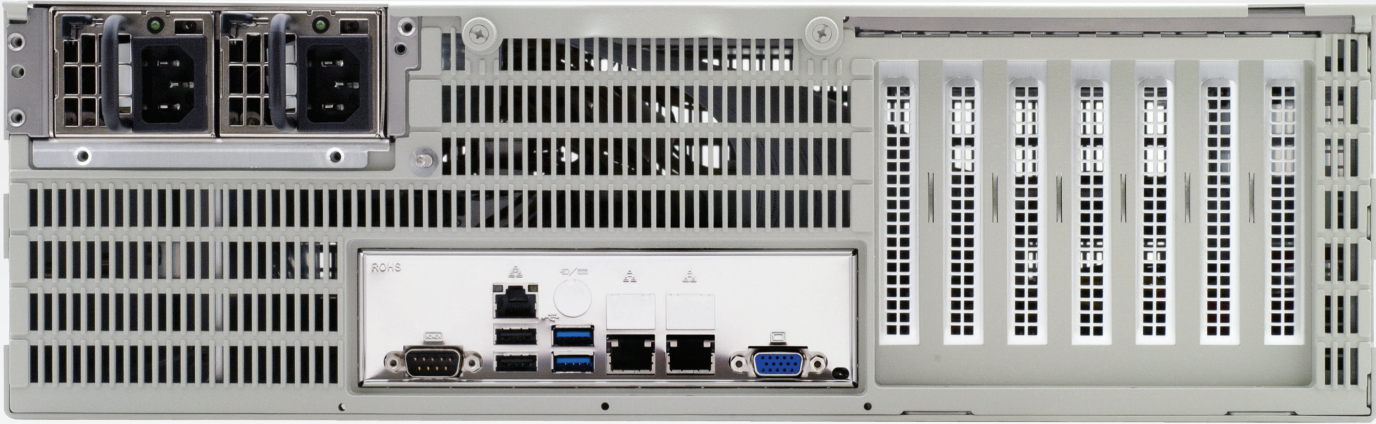
STORAGE



EXPLOIT



DISSEMINATE



## Technical Specifications

2 Intel® Xeon® Scalable Bronze, Silver, Gold, or Platinum CPUs  
with up to 28 cores per processor  
Up to 2TB memory with 16 DIMM slots

## Management and Operating System

Windows®, Linux®, VMWARE® and other hypervisors  
IPMI v2.0, Redfish option available

## Expansion and Modular Maintainability

Up to 6 full-height PCIe 3.0 cards  
4 PCIe 3.0x16 and 2 PCIe 3.0x8  
3 Removable Fans

## Input/Output Versatility

### Front Access

8 Removable, Hot Pluggable, 2.5" SATA/SAS3 drives, U.2 NVME option available  
1 CD-RW/DVD-RW Drive, Blu-Ray Option  
1 Power Switch

### Rear Access

2 1GBaseT or 10GBaseT Ethernet Ports (RJ45)  
2 USB 3.0 and USB 2.0  
1 IPMI 2.0  
1 VGA Graphic Port

## Power Supply Options

Single or Redundant 100/240V VAC (50/60Hz, 400Hz)  
Single or Redundant 10-36 VDC, 32 Amps  
Single or Redundant 36-72 VDC, 18 Amps  
MIL-STD 461

## Environmental\*

### Operating

Temperature: 0°C to 50°C  
Extended Temperature: -15°C to 65°C  
Humidity: 8% to 95% (non-condensing)  
Shock: 3 axis, 35g, 25ms  
Vibration: 4.76Grms, 10Hz to 2000 Hz (SSD)

### Non-Operating

Temperature: -40°C to 70°C  
Humidity: 5% to 95% (non-condensing)

## Additional Options

Shock Pins  
Front Door Filter  
Slide Rails  
Tamper-Evidence Features

## Mechanical

Height: 3U or 5.25" inches (133.35mm)  
Width: 17 inches (432mm)  
Depth: 20 inches (508mm)  
Weight (Typical)\*: 29 pounds (13.1kg)  
19" rackmountable

\* Mercury Systems designs all products to meet or exceed listed data sheet specifications. Some specifications including I/O profiles, weight, and thermal profiles are configuration dependent. Contact Mercury for information specific to your desired configuration requirements.

The Mercury Systems logo and the following are trademarks or registered trademarks of Mercury Systems, Inc.: Mercury Systems, Innovation That Matters, EnterpriseSeries. Other marks used herein may be trademarks or registered trademarks of their respective holders. Mercury believes this information is accurate as of its publication date and is not responsible for any inadvertent errors. The information contained herein is subject to change without notice. Copyright © 2019 Mercury Systems, Inc. 6501.01E-0519-DS-XR63U8



INNOVATION THAT MATTERS\*

### TRUSTED MISSION SOLUTIONS

47200 Bayside Parkway • Fremont, CA 94538 USA  
(510) 252-0870 • Fax (510) 490-5529

### TRUSTED MISSION SOLUTIONS INTERNATIONAL

5 rue Irène Joliot-Curie • Eybens 38320 France  
+33 476 147786 • Fax + 33 476 147789